



UNCTAD

UNITED NATIONS CONFERENCE ON TRADE AND DEVELOPMENT

***CARGO MANIFEST
XML MESSAGE DESCRIPTION***

ASYCUDA
w*world*

SAINT KITTS & NEVIS

Version 1.5, December 2013

<i>Introduction</i>	3
<i>ASYCUDA World XML Manifest and Degroupage Message Format</i>	3
General Description	3
Manifest Data Stream	3
Manifest Data Stream Tag Description	5
Special Considerations	8
Degroupage Data Stream	9
Degroupage Data Stream Tag Description	10
Special Considerations	10
Additional Information	10
<i>Annex A – Visual representation - General Segment (for manifest)</i>	11
<i>Annex B – Visual representation - BOL segment</i>	12

Introduction

The United Nations Conference on Trade and Development (UNCTAD) as part of its ASYCUDA Programme has developed applications, which allow the electronic data interchange (EDI) between Customs Administrations and the trade community.

The present document will explain how trade operators can submit electronically data from a carrier’s manifest in XML format. The latter covers the complete manifest including cargo details of each transport document and the degroupage system.

ASYCUDA World XML Manifest and Degroupage Message Format

General Description

The ASYCUDA WORLD module ASYFCI (ASYCUDA’s Fast Cargo Integration) is the client application used by the system to integrate the cargo manifest and the degroupage (break down of consolidated cargo). Any carrier that has its own application or system to process a manifest and the degroupage will not be required to key in again all the information, carriers will only need to extract data from their systems and transform into an XML message.

Manifest Data Stream

The structure of the XML message, named as the Asycuda World Manifest Data Stream (AWMDS), consists of two big data segments:

- The general segment of the manifest <General_segment >
- Detailed data for each transport document <Bol_segment>

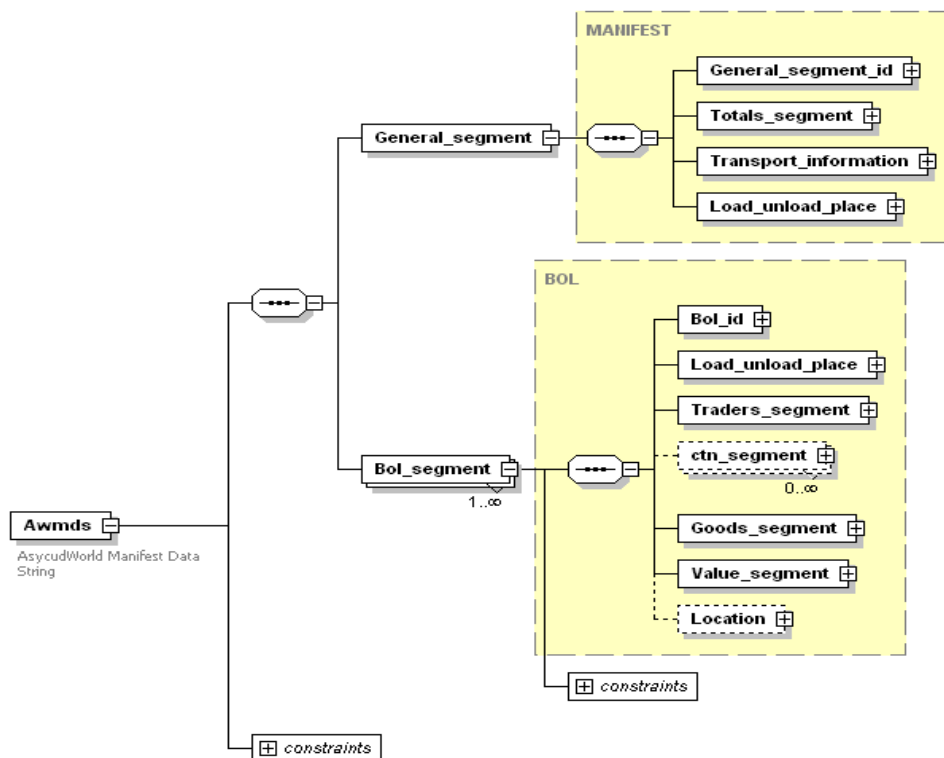


Figure 1

The general segment is composed by the following sub segments (see ANNEX A):

1. Manifest identification <General_segment_id>
2. Summary of different quantities included in the manifest <Totals_segment>
3. Manifest transport information <Transport_information>. This tag also contains the carrier details information sub segment <Carrier>.
4. Information about the place/Port of departure and destination at the manifest level <Load_unload_place>

The bill of lading segment is composed as follows (see [ANNEX B](#)):

1. Bill of Lading identification <Bol_id>
2. Information about the place/Port of departure and destination at the bill of lading level <Load_unload_place>
3. Traders' information <Traders_segment>. This sub segment also is divided in another 3 sub segments:
 - a. Exporter information <Exporter>
 - b. Notify information <Notify>
 - c. Consignee information <Consignee>
4. Detailed data for each container <ctn_segment>
5. Goods description <Goods segment>.
6. Export declarations segment <Sad_export>
7. Detailed data containing the bill of lading valuation tags <Value_segment>. This sub segment also is composed by another 4 sub segments:
 - a. Freight information <Freight_segment>
 - b. Customs valuation information <Customs_segment>
 - c. Insurance information <Insurance_segment>
 - d. Transport valuation information <Transport_segment>.
8. Location information <Location>.

The AWMDS message must have information about only *one manifest* and can accept a large number of bills of lading.

The following attached files are part of this document:

- Awmds.xsd → This is the schema file to validate manifest xml files (Awmds element). It is also built-in the ASYFCI module.

You can also have attached to this documentation xml manifest files as examples. This files show different types of manifests.

Manifest Data Stream Tag Description

The tables in this section provide information about each Tag required for the AWMDS XML message, including the format, their use (optional or mandatory), and tag name.

The format specified for each tag can be one of the following types:

Format	Definition	Examples
INT	Integer number up to 18 digits	1 8758943
N#	Decimal number up to 18 digits including decimal places and point. The number (#) sign should be replaced with the actual length required.	N5 =>10.00 N5 =>4789 N8 =>556.259
AN#	Alphanumeric string.	AN1 =>C AN35 =>JOHN DOE
DATE	Date format yyyy-MM-dd (year-month-day)	2007-12-31
TIME	Time format hh:mm:ss	12:30:00

SEGMENT: < General_segment_id >			
TAG NAME	FORMAT	USE	DESCRIPTION
< Customs_office_code >	AN5	Mandatory	Customs office code where manifest will be submitted
<Voyage_number>	AN17	Mandatory	Voyage or flight number assigned by the carrier (upper case)
<Date_of_departure>	DATE	Mandatory	Departure or sailing date
<Date_of_arrival>	DATE	Optional	Arrival date
<Time_of_arrival>	TIME	Option	Arrival time(Mandatory to Register)

SEGMENT: < Totals_segment >			
TAG NAME	FORMAT	USE	DESCRIPTION
<Total_number_of_bols>	INT	Mandatory	Total number of transport documents (Bill of Lading, Airway Bill, etc.)
<Total_number_of_packages>	N18	Mandatory	Number of packages for this manifest. Total piece count of goods being transported
<Total_number_of_containers>	INT	Mandatory	Total number of containers described in this manifest
<Total_gross_mass>	N18	Mandatory	Total gross mass (KG) for this manifest

SEGMENT: < Transport_information >			
TAG NAME	FORMAT	USE	DESCRIPTION
<Mode_of_transport_code>	AN3	Mandatory	Mode of transportation (1=Sea; 2=Rail; 3=Road; 4=Air; 5=Postal; 6=Multimodal; 7=Fixed; 8=Inland waterways; 9=Unknown)
<Identity_of_transporter>	AN27	Mandatory	Transport unit name (e.g. Vessel or Aircraft name)
<Nationality_of_transporter_code>	AN3	Mandatory	Transport unit nationality code (ISO 2-Alpha country code)
<Place_of_transporter>	AN35	Mandatory	Cargo carrier name (SCAC/IATA)
<Registration_number_of_transport_code>	AN35	Mandatory	IMO/IATA registration reference
<Date_of_registration>	DATE	Optional	IMO/IATA registration date (if available)
<Master_information>	AN70	Mandatory	Master/Captain name

SEGMENT: < carrier >			
TAG NAME	FORMAT	USE	DESCRIPTION
<Carrier_code>	AN17	Mandatory	Carrier code assigned by Customs
<Carrier_name>	AN35	Optional	Carrier name
<Carrier_address>	AN140	Optional	Carrier address

SEGMENT: < Load_unload_place >			
TAG NAME	FORMAT	USE	DESCRIPTION
<Place_of_departure_code>	AN5	Mandatory	Place/Port of departure code where voyage started (UN/LOCODE)
<Place_of_destination_code>	AN5	Mandatory	Place/Port of destination code where goods are off-loaded (UN/LOCODE)

SEGMENT: < Bol_id >			
TAG NAME	FORMAT	USE	DESCRIPTION
<Bol_reference>	AN17	Mandatory	Transport document reference number (Bill of Lading no., Airway bill no.)
<Line_number>	INT	Mandatory	Transport document sequence line number
<Bol_nature>	AN2	Mandatory	Transport document use: 22= Exports; 23= Imports; 24= In-Transit; 26= Freight remaining on board (FROB); 28= Transshipment
<Bol_type_code>	AN3	Mandatory	Transport document type code
<Master_bol_ref_number>	AN17	Mandatory ¹	Master bill of lading reference number for consolidated cargo
<Unique_carrier_reference>	AN35	Optional	Unique cargo reference code

SEGMENT: < Load_unload_place >			
TAG NAME	FORMAT	USE	DESCRIPTION
<Place_of_loading_code>	AN5	Mandatory	Place/Port of initial loading code (UN/LOCODE)
<Place_of_unloading_code >	AN5	Mandatory	Place/Port of final destination code (UN/LOCODE)

SEGMENT: < Exporter >			
TAG NAME	FORMAT	USE	DESCRIPTION
<Exporter_name>	AN75	Mandatory	Exporter/Supplier Name
<Exporter_address >	AN140	Mandatory	Exporter/Supplier Address

SEGMENT: < Notify >			
TAG NAME	FORMAT	USE	DESCRIPTION
<Notify_code>	AN17	Optional	Notify Code
<Notify_name>	AN75	Mandatory	Notify Name
<Notify_address >	AN140	Mandatory	Notify Address

SEGMENT: < Consignee >			
-------------------------------------	--	--	--

¹ Mandatory when submitting bills of lading or AWB that belongs to consolidated cargo during degroupage. If the bill of lading or AWB does not belong to consolidated cargo the tag is optional.

TAG NAME	FORMAT	USE	DESCRIPTION
<Consignee_code>	AN17	Optional ²	Consignee code
<Consignee_name>	AN75	Mandatory ³	Consignee name
<Consignee_address >	AN140	Mandatory	Consignee address

SEGMENT: < ctn_segment >			
TAG NAME	FORMAT	USE	DESCRIPTION
<Ctn_reference>	AN17	Mandatory	Container identification number. Four letters for container owner, six-digit container serial number and check digit (e.g. OTEU1223808). No spaces or other separators allowed.
<Number_of_packages >	INT	Mandatory	Number of packages for this container
<Type_of_container >	AN4	Mandatory	Container size-type code (ISO_6346:1995)
<Empty_Full >	AN3	Mandatory	Container flag: empty, full, etc. indicator
<Marks1>	AN10	Optional	Container 1st seal number
<Marks2>	AN10	Optional	Container 2nd seal number
<Marks3>	AN10	Optional	Container 3rd seal number
<Sealing_Party>	AN3	Optional	Sealing party (affixing seal) code
<Temp_min>	INT	Optional	Minimum temperature for reefer container (Celsius)
<Temp_max>	INT	Optional	Maximum temperature for reefer container (Celsius)
<Humidity>	INT	Optional	Humidity level for reefer container
<Dangerous_goods_code>	AN10	Optional	Dangerous goods code (UNDG)
<Ctn_goods_description>	AN500	Mandatory	Description of goods in container
<Ctn_gross_mass>	N18	Mandatory	Gross mass for goods in container KG

SEGMENT: < Goods_segment>			
TAG NAME	FORMAT	USE	DESCRIPTION
<Number_of_packages>	N18	Mandatory	Total number of packages for this transport document
< Package_type_code >	AN2	Mandatory	Package type code (UNECE CEFACT Recommendation 21 Alpha-2 code)
< Gross_mass >	N18	Mandatory	Total gross mass (KG) for this transport document
< Shipping_marks >	AN2000	Mandatory	Shipping marks and numbers
< Goods_description >	AN2000	Mandatory	Goods description
<Volume_in_cubic_meters>	N18	Optional	Volume in cubic meters
< Num_of_ctn_for_this_bol >	INT	Mandatory	Number of containers in this transport document
<Information>	AN2000	Optional	Additional information

SEGMENT: < Sad_export>			
TAG NAME	FORMAT	USE	DESCRIPTION
<Customs_office>	AN5	Optional	Customs office code where the declaration was submitted
<Registration_serial>	AN1	Optional	Registration serial
<Registration_number>	INT	Optional	Registration number
<Registration_date>	DATE	Optional	Registration date

SEGMENT: < Freight_segment>			
--	--	--	--

² The consignee code is optional only on House Bills of Lading/AWB. If the transport document is a Master Bill of Lading or Master Airway Bill, the Consignee code must contain the Consolidator's consignee code for them to degroup.

³ The consignee name and consignee address become mandatory if the consignee code is left empty.

TAG NAME	FORMAT	USE	DESCRIPTION
<PC_indicator>	AN3	Mandatory	Prepaid/Collect Freight indicator (PP=Prepaid; CC=Collect)
<Freight_value>	N18	Optional	Freight instruction value
<Freight_currency>	AN3	Optional	Freight instruction currency code (ISO)

SEGMENT: <Customs_segment>

TAG NAME	FORMAT	USE	DESCRIPTION
<Customs_value>	N18	Optional	Customs value
<Customs_currency>	AN3	Optional	Customs currency code (ISO)

SEGMENT: <Insurance_segment>

TAG NAME	FORMAT	USE	DESCRIPTION
<Insurance_value>	N18	Optional	Insurance cost
<Insurance_currency>	AN3	Optional	Insurance cost currency code (ISO)

SEGMENT: <Transport_segment>

TAG NAME	FORMAT	USE	DESCRIPTION
<Transport_value>	N18	Mandatory	Overall freight cost
<Transport_currency>	AN3	Mandatory	Overall freight cost currency code (ISO)

SEGMENT: <Location>

TAG NAME	FORMAT	USE	DESCRIPTION
<Location_code>	AN17	Optional	Location code of transit shed or storage area
<Location_info>	AN35	Optional	Location additional information

Special Considerations

1. In some cases, data may be unavailable when constructing the AWMDS message. If Treasury Department does not define that information as mandatory, the user can omit those tags.
2. It is very important to include correctly the identification data of the manifest when creating each transport document segment (Bo1_segment).

Degroupage Data Stream

The structure of the XML message, named as the Asycuda World Bill Of Lading Degroupage Stream (Awbolds), consists of two data segments:

- The master bill of lading reference segment <Master_bol >
- Detailed data for each house transport document <Bol_segment>

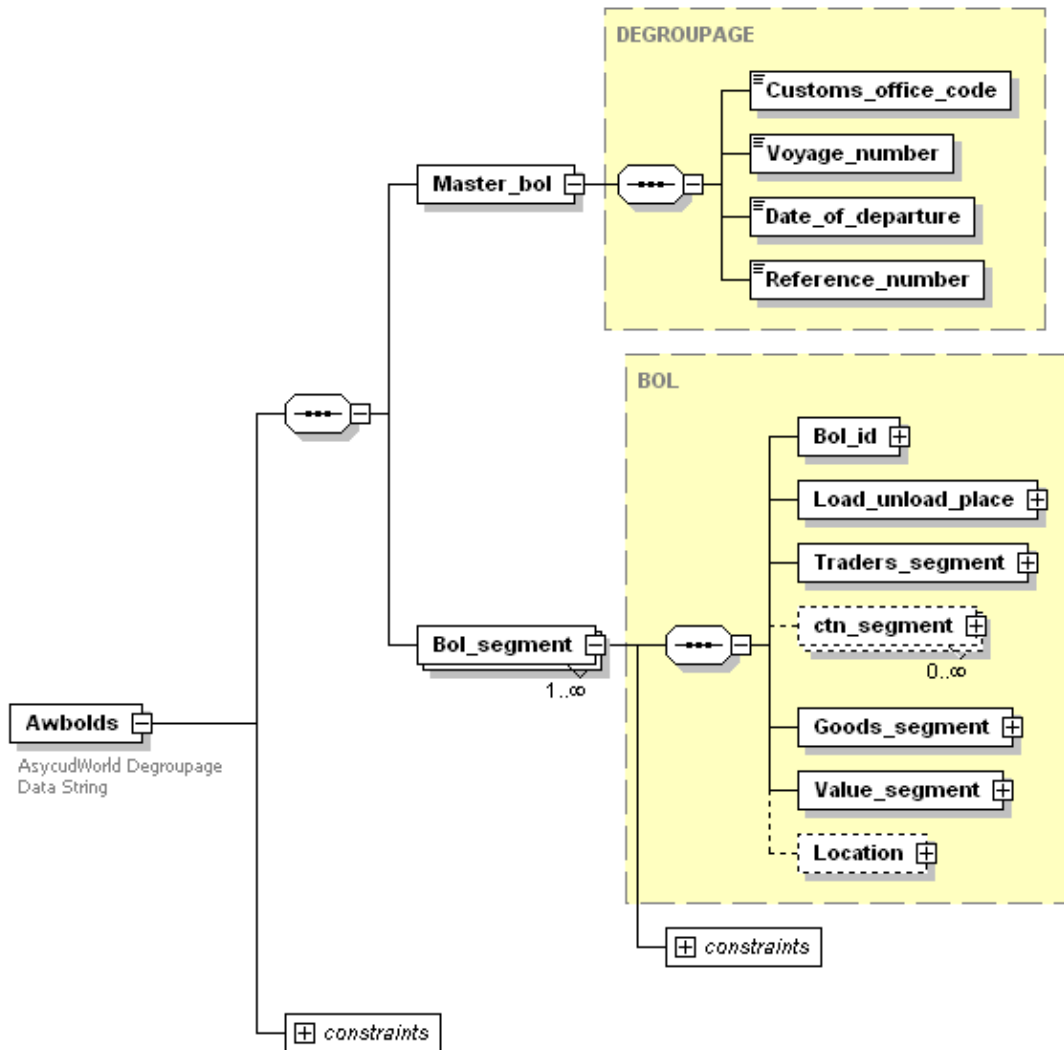


Figure 2

The structure of the <Bol_segment> is the same one that the segment <Bol_segment> of the manifest (see [ANNEX B](#)).

The Awbolds message must have information about only one degroupage and will accept a large number of bills of lading.

The following attached files are part of this document:

- Awbolds.xsd → this is the schema file to validate degroupage xml files (Awbolds element). It is also included in the ASYFCI module.

You can also have xml degroupage files as examples. This files show different types of degroupage.

Degroupage Data Stream Tag Description

The table in this section provide information about each tag required for the <Master_bol> segment, including the format, their use (optional or mandatory), and tag name.

SEGMENT: < Master_bol >			
TAG NAME	FORMAT	USE	DESCRIPTION
< Customs_office_code >	AN5	Mandatory	Customs office code where manifest will be submitted
<Voyage_number>	AN17	Mandatory	Voyage or flight number assigned by the carrier
<Date_of_departure>	DATE	Mandatory	Departure or sailing date
<Reference_number>	AN17	Mandatory	Master transport document reference number

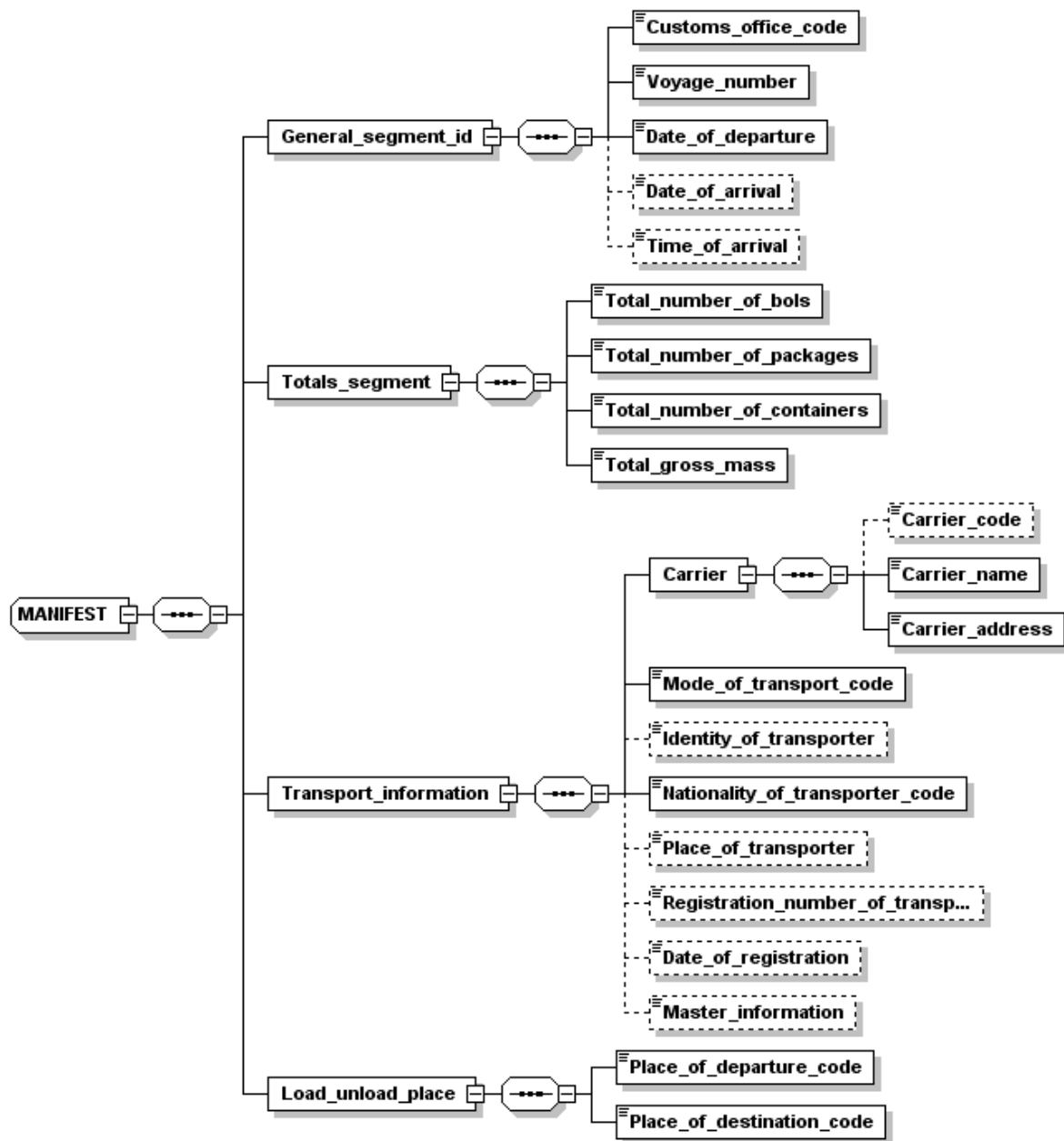
Special Considerations

1. In some cases, data may be unavailable when constructing the AWBOLDS message. If Treasury Department does not define that information as mandatory, the user can omit those tags.
2. To perform the degroupage, the manifest should be either stored or registered.
3. The degroupage can be done in one or multiple xml files (<Master_bol> segment should be the same for all xml files).
4. The Awbolds message should have information about only one Master document.
5. ANNEX A and ANNEX B do not display all tags described in detail in this document.

Additional Information

- If you need to add new Bill of Ladings to Manifest or Degroupage, you can use your previous file, add the new BOL, and reload it. The system just will add new information, old data will be skipped.
- If you had erroneous data, you can delete old information and reload the file, the system will update all information re-submitted.

Annex A – Visual representation - General Segment (for manifest)



Annex B – Visual representation - BOL segment

